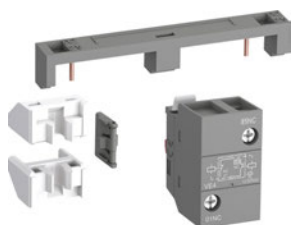


PRODUCT-DETAILS

VEM4

VEM4 Mechanical and Electrical Interlock Unit



General Information

Extended Product Type	VEM4
Product ID	1SBN030111R1000
EAN	3471523130616
Catalog Description	VEM4 Mechanical and Electrical Interlock Unit
Long Description	<p>Mechanical and electrical interlock sets</p> <p>VEM4 mechanical and electrical interlock set for the interlocking of two AF contactors. VEM4 set includes a mechanical interlock unit VM4 with 2 fixing clips (BB4) and a VE4 electrical interlock block with A2-A2 connection.</p> <p>Fixing the electrical interlock block to the contactor front face connects the 2 built-in N.C. interlocking contacts with the two coils. VE4 block must be used with A2-A2 connection to respect the electrical connection diagram.</p>

Ordering

E-Number (Finland)	3706551
E-Number (Sweden)	3210004
EAN	3471523130616
Minimum Order Quantity	1 piece
Customs Tariff Number	85389099

Dimensions

Product Net Width	25 mm
Product Net Height	43 mm
Product Net Depth /	31.6 mm

Length

Product Net Weight	0.035 kg
--------------------	----------

Container Information

Package Level 1 Units	box 1 piece
Package Level 1 Width	92 mm
Package Level 1 Height	46 mm
Package Level 1 Depth / Length	35 mm
Package Level 1 Gross Weight	0.035 kg
Package Level 1 EAN	3471523130616
Package Level 2 Units	box 132 piece
Package Level 2 Gross Weight	4.62 kg
Package Level 3 Units	3168 piece

Environmental

RoHS Status	Following EU Directive 2011/65/EU
-------------	-----------------------------------

Technical UL/CSA

Tightening Torque UL/CSA	Auxiliary Circuit 11 IA
-----------------------------	-------------------------

Additional Information

Connecting Capacity Auxiliary Circuit	Flexible with Ferrule 1/2x 0.75 ... 2.5 mm ² Flexible with Insulated Ferrule 2x 0.75 ... 1.5 mm ² Flexible with Insulated Ferrule 1x 0.75 ... 2.5 mm ² Rigid 1/2x 1 ... 2.5 mm ²
Conventional Free-air Thermal Current (I _{th})	acc. to IEC 60947-5-1, q = 40 °C 16 A
Maximum Electrical Switching Frequency	1200 cycles per hour
Maximum Mechanical Switching Frequency	1800 cycles per hour
Medium Description	VEM4 Mechanical and Electrical Interlock Unit is used for the interlocking of two AF contactors of the same size: for AF09 ... AF16...-30... / AF26 ... AF38...-30-00 / AF09, AF16...-40-00 / AF26, AF38...-40-00. When mounted between two contactors, the VEM4 interlock unit prevents one of the contactors from closing as long as the other contactor is closed. VEM4 set includes a mechanical interlock unit VM4 with 2 fixing clips (BB4) and a VE4 electrical interlock block with A2-A2 connection. Fixing the electrical interlock block to the contactor front face connects the 2 built-in N.C. interlocking contacts with the two coils. VE4 block must be used with A2-A2 connection to respect the electrical connection diagram.
Number of Auxiliary Contacts NC	1
Number of Auxiliary Contacts NO	1
Order Multiple	1 piece
Product Main Type	Accessories for Block Contactors
Product Name	Mechanical and Electrical Interlock Unit
Rated Impulse Withstand Voltage (U _{imp})	6 kV
Rated Insulation Voltage	acc. to IEC 60947-5-1 and VDE 0110 (Gr. C) 690 V

(U_i)

RoHS Date	20171115
Suitable For	AF09 AF12 AF16 AF26 AF30 AF38
Terminal Type	Screw Terminals
Tightening Torque	Auxiliary Circuit 1.2 N·m
Wire Stripping Length	Auxiliary Circuit 10 mm

Certificates and Declarations (Document Number)

CB Certificate	CB_SE-93053
CCC Certificate	CCC_2013010304651497
CQC Certificate	CQC2013010304651497
Declaration of Conformity - CCC	2020980304001259
Declaration of Conformity - CE	1SBD250007U1000
Environmental Information	1SBD250142E1000
GOST Certificate	GOST_POCCFR.ME77.B07175.pdf
Instructions and Manuals	1SBC101028M6801
RINA Certificate	RINA_ELE084013XG
RoHS Information	1SBD250007U1000
UL Certificate	UL_20091124-E312527-6-1
UL Listing Card	UL_E312527

Classifications

ETIM 4	EC002498 - Accessories for low-voltage switch technology
ETIM 5	EC002498 - Accessories for low-voltage switch technology
ETIM 6	EC001044 - Mechanic interlock for switch
ETIM 7	EC001044 - Mechanic interlock for switch
UNSPSC	39120000
WEEE Category	5. Small Equipment (No External Dimension More Than 50 cm)

Categories

Low Voltage Products and Systems → Control Products → Contactors → Block Contactors Accessories

